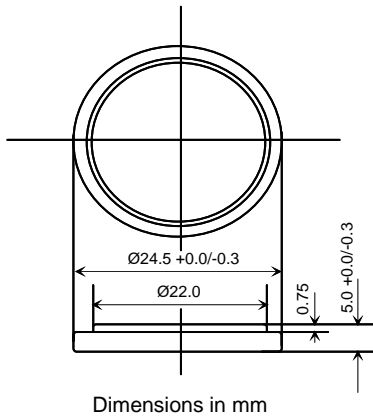


CHEMISTRY LITHIUM MANGANESE DIOXIDE
 SYSTEM PRIMARY Li/MnO₂
 MODEL CR2450

SPECIFICATIONS

Nominal voltage	3.0V
Nominal capacity (@0.4mA, cut-off 2.0V)	550mAh
Continuous standard load	0.4mA
Operating temperature	-20°C / +60°C
Weight	6.5g



Standard and customized tab configurations are available upon request.

WARNING: DO NOT short-circuit, charge between "+" and "-".
 DO NOT over-discharge, put in fire, disassemble.
 Finish sealing less than 5 seconds at 200°C~250°C.
 When the battery is discharged to cut-off voltage,
 dispose of it in compliance with federal, state and
 local laws or regulations.

