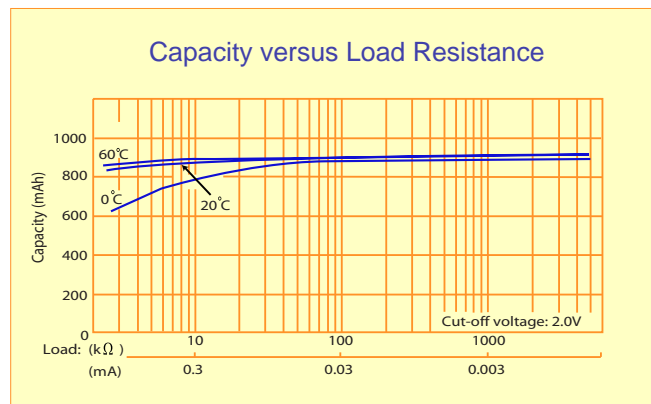
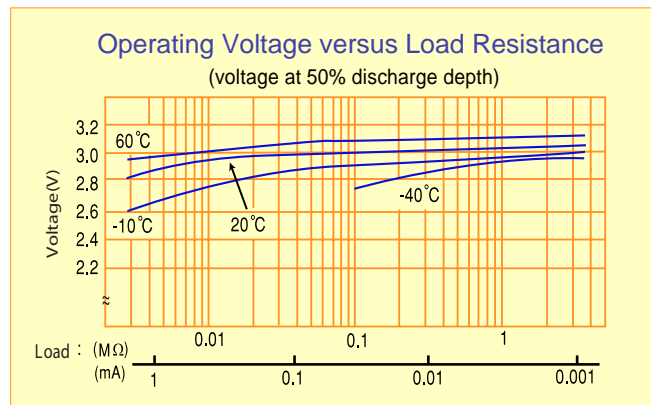
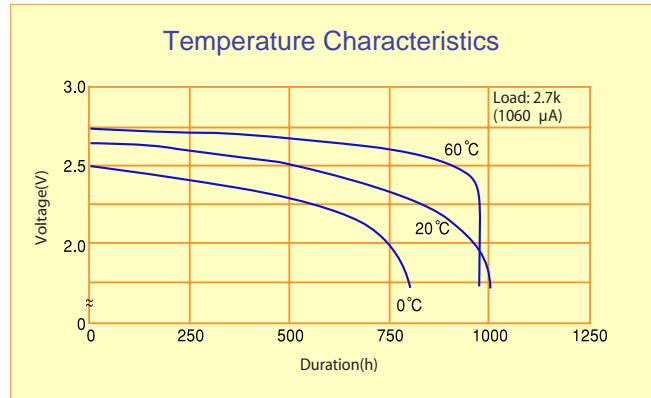
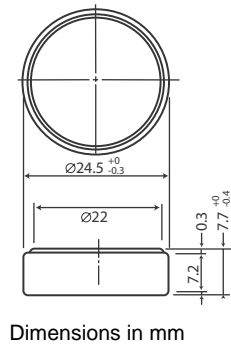


CHEMISTRY:  
SYSTEM:  
MODEL:

LITHIUM MANGANESE DIOXIDE  
PRIMARY Li/MnO<sub>2</sub>  
CR2477

**SPECIFICATIONS**

|                            |                |
|----------------------------|----------------|
| Nominal Voltage            | 3.0V           |
| Rated Capacity             | 850mAh         |
| Standard Discharge Current | 1mA            |
| Operating Temperature      | -20°C / + 60°C |
| Typical Weight             | 8g             |



**Cautions:** Do not recharge, short circuit, heat, disassemble or dispose of cells in fire. Do not over discharge. Do not reversely insert the positive and cathode in use. Do not solder directly.